

UNIVERSITY AVENUE RECONSTRUCTION PROJECT PHASE 2

TRAFFIC PATTERN CHANGES

BEGINNING  
April 22, 2019

To request road closure notes by e-mail, please e-mail us at:  
[University.Avenue@Waterloo-IA.org](mailto:University.Avenue@Waterloo-IA.org)  
[facebook.com/UniversityAveWaterloo](https://www.facebook.com/UniversityAveWaterloo)  
[cityofwaterlooiowa.com/departments/engineering/UniversityAve.php](http://cityofwaterlooiowa.com/departments/engineering/UniversityAve.php)



LEGEND

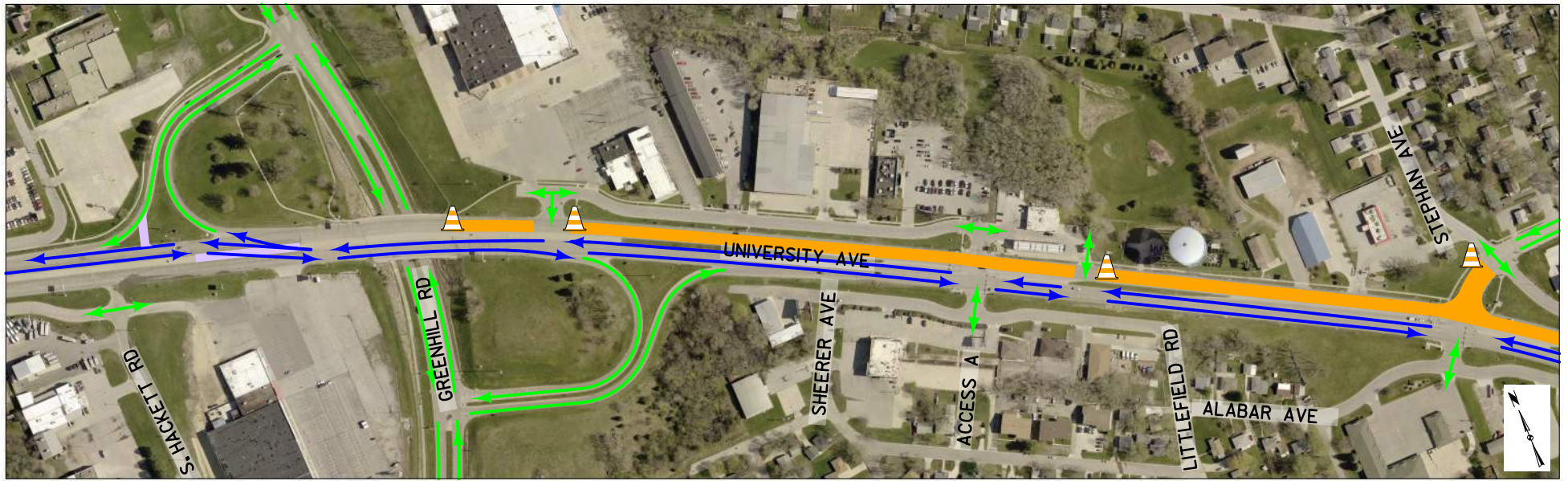
TRAFFIC PATTERNS  
ADJACENT TO LANE CLOSURES

ACCESS  
LOCATIONS

WORK ZONE

NOTE: ACCESS TO UNIVERSITY AVENUE  
WILL BE MAINTAINED FOR PROPERTIES  
ADJACENT TO THE WORK ZONE





UNIVERSITY AVENUE RECONSTRUCTION PROJECT PHASE 1

TRAFFIC PATTERN CHANGES

BEGINNING  
April 22, 2019

To request road closure notes by e-mail, please e-mail us at:  
[University.Avenue@Waterloo-IA.org](mailto:University.Avenue@Waterloo-IA.org)  
[facebook.com/UniversityAveWaterloo](https://facebook.com/UniversityAveWaterloo)  
[cityofwaterlooiowa.com/departments/engineering/UniversityAve.php](http://cityofwaterlooiowa.com/departments/engineering/UniversityAve.php)



LEGEND

TRAFFIC PATTERNS  
ADJACENT TO LANE CLOSURES



ACCESS  
LOCATIONS



WORK ZONE



NOTE: ACCESS TO UNIVERSITY AVENUE  
WILL BE MAINTAINED FOR PROPERTIES  
ADJACENT TO THE WORK ZONE

